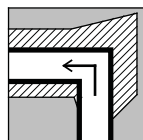
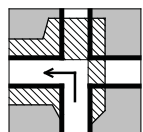
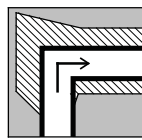


THE FOLLOWING DIAGRAMS SHOW AREAS THAT ARE CONSIDERED TO BE UNSAFE

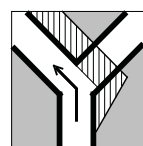
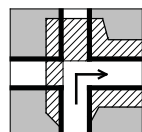
NO STANDING AREAS ARE SHOWN WITH STRIPES



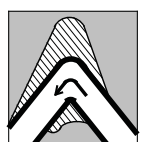
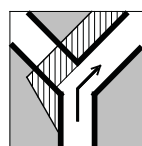
LEFT OR RIGHT CORNER



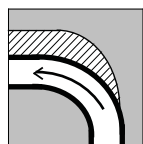
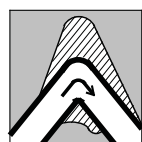
LEFT OR RIGHT AT CROSSROADS



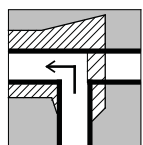
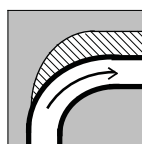
LEFT OR RIGHT AT CROSSROADS



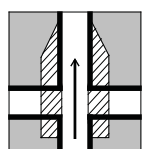
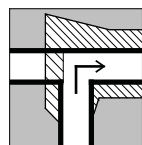
LEFT OR RIGHT HAIRPINS



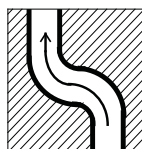
LEFT OR RIGHT SWEEPERS



LEFT OR RIGHT JUNCTIONS



CROSSROADS AND ESSES/ CHICANES



Use this guide to ensure safe viewing in areas outside designated spectator points

SPECTATING SAFELY

Don't

- Stand on the road
- Stand below the level of the road
- Sit close to the road
- Stand in front of fences or objects preventing you from moving quickly
- Stand in front of signs or arrows
- Remove rally signs or arrows
- Be distracted

Always

- Stay ALERT and expect the unexpected
- Stand in a safe location
- Listen for approaching cars
- Remain alert
- Leave yourself room to move quickly
- Keep children under supervision
- Obey rally officials
- Help the officials to run a safe stage

Be Sure That

- The unexpected can happen

Please Protect

- Yourself
- Others around you
- Other people's property
- Wildlife and flora

STAGE CLOSURE AND OPENING

Targa West has permission from the local government authority and the Commissioner of Police to close the roads for this competition for the time specified. All roads, gates and driveways leading onto the rally stage need to be closed off by manning, taping and tagging.

To ensure the safety of the public, officials and the crews the following procedure will take place.

- Before the road closure time unused gates will be tagged.
- At the road closure time the roads will be closed and officials will begin to tape and tag all driveways and gates.
- 30-minutes before the stage start, Official Car 000, will inspect that all roads, gates and driveways have been closed.
- 15-minutes before the stage starts, Official Car 00 will check that all officials and the public are in a safe location
- 5-minutes before the stage starts, Official Car 0A, with flashing lights and sirens will be a warning that the stage is about to begin
- The Challenge Category (cars without roll cages) will start competing
- They will be followed by Official Car 0B to ensure they have all cleared the stage
- Approximately 8 minutes later the Competition Rally Cars will compete
- They will be followed by the medical team, Official Car FIV, to check on the safety of the stage
- Official Car SWEEPER with a **GREEN flashing light** will then traverse the stage notifying Officials to open up roads, driveways, gates and remove Chicanes from the road.
- The road will then open to the public.

MOTORSPORT IS DANGEROUS

CAMS and its Associated Entities including Targa West exclude all liability for your harm howsoever arising from your attendance / participation at the event except to the extent prohibited by law. For the full disclaimer wording, refer to the website at ...

www.targawest.com.au

EMERGENCY CONTACT

In case of a life threatening

EMERGENCY call... **000**
RALLY CONTACT

To contact Targa West at any time call **(08) 9324 4566**

During the Rally the HQ number is **(08) 6364 8733**